



Grain Tracker™  
Operators Manual



***Digi-Star***★

Ft. Atkinson, Wisconsin USA

***Digi-Star***★Europe

Pannigen, The Netherlands

[www.digi-star.com](http://www.digi-star.com)

## TABLE OF CONTENTS

GRAIN TRACKER™ PC SOFTWARE .....	3
Getting Started .....	3
Minimum System Requirements .....	3
Installing Grain Tracker™ PC Software .....	3
Opening Grain Tracker™ Program .....	3
Grain Tracker™ Icons .....	4
File Menu .....	5
Utilities Menu .....	5
Report Generator .....	9
Transferring Data Records from Indicator to PC .....	10

# GRAIN TRACKER™ PC SOFTWARE

Software imports data collected by indicator. Weight, date, time and other information is transmitted from indicator and stored in one of the following data formats:

- Adobe Acrobat™ (PDF)
- Microsoft Excel™ (XLS)
- Web Page (HTML)
- Comma Separated Value (CSV)

## Getting Started

This section includes steps to install and run software using default settings. Review this section before beginning installation process.

## Minimum System Requirements

Make certain your PC includes the following:

Pentium™ 100 or better PC, Microsoft Windows XP or higher, 100 MB free disk space, 256 MB Ram, CD Drive, mouse, printer, free USB port.

## Installing Grain Tracker™ PC Software

Install software:

1. Close all open programs.
2. Insert flash drive into USB port. If Auto Run enabled on computer, follow installation instructions. If installation screen does not appear, go to Start and select Run. From Run menu, browse flash drive and select "setup.exe". Install screen appears. Follow installation instructions.

## Opening Grain Tracker™ Program



1. To open program click on Grain Tracker™ icon on desktop
2. Once started Grain Tracker™ shows in taskbar of PC.

## Grain Tracker™ Icons



1. Retrieve and Store Data: this command retrieves and stores the information from the USB flash drive to your PC.



2. Reports: This command will allow you to open standard reports.

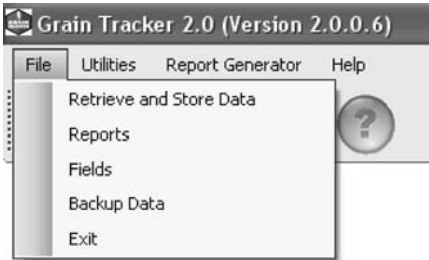


3. Fields: This command allows you to enter Field information



4. ID's: This command allows you to enter ID information.

## File Menu



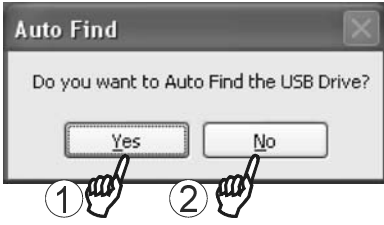
File Menu:

- Retrieve and Store Data, Reports and Fields are the same as icons.
- Backup Data - will create a copy of all information and is recommended to be performed after each retrieval of data.
- Exit - Exits the program.

## Utilities Menu

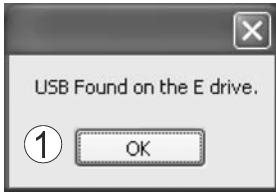


Select from options. See explanations shown below.



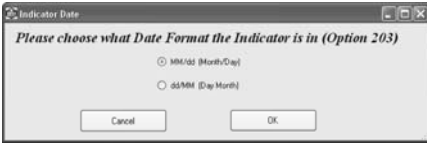
**USB Drive for Files:**

- 1. Yes will attempt to find the drive. Once found an acknowledgment will be shown.
- 2. No will bring up browser box, select path to USB drive then OK.



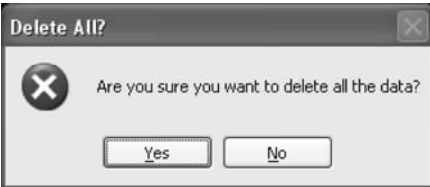
**Reporting Preferences:**

Allows selecting file type, name, format.



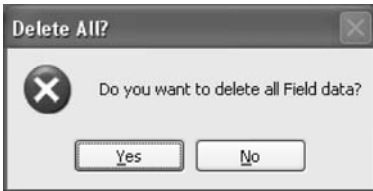
**Indicator Date Format:**

This option needs to be set to the same as the scale indicator.

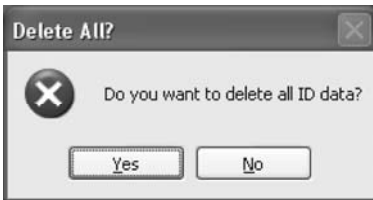


**Delete All Data from PC:**

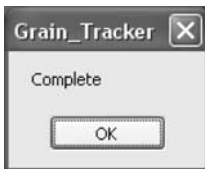
Deletes all stored data records from PC.



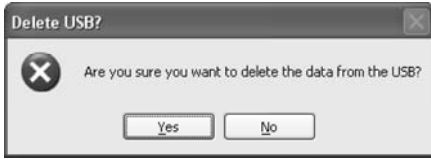
Deletes field data only.



Delete ID Data only.



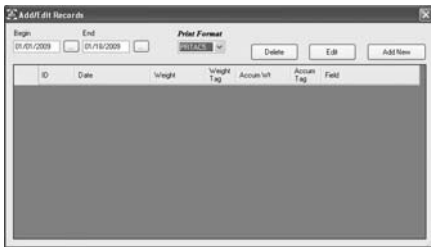
Confirms Delete.

**Delete Data from USB:**

Pops up confirmation, then deletes all stored data records from USB flash drive if YES selected.

**Clear/View Log of unstorable Data**

Clear removes history of information retrieved that did not conform to Print formats 1-6. View will display the history of information retrieved that was did not conform to Print formats 1-6.

**Add/Edit Records**

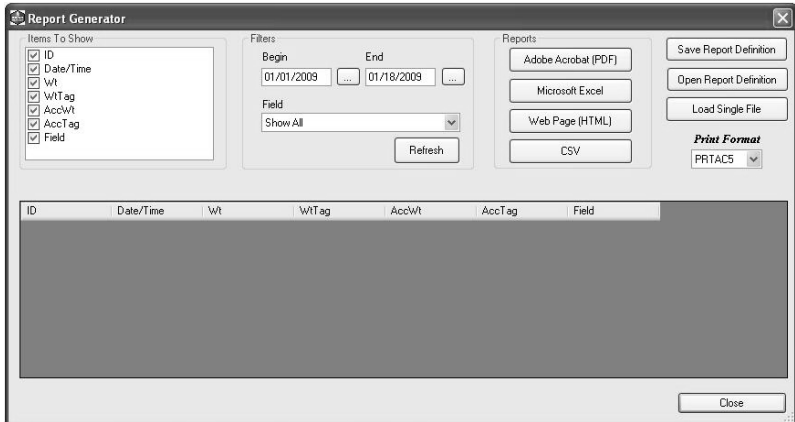
This allows you to Delete, Edit or Add New records. This feature is to only be used in emergency. To perform an Edit or Delete, click in the row that is to be Edited or Deleted and click the appropriate button.

**Add Record**

This allows you to add a record. You must fill in all boxes. This feature is for emergency use only.



## Report Generator



### **Items to Show**

Check or uncheck items that you do not want to be displayed in the Report Generator.

### **Filters**

Change the Begin Date, End Date or Field filter to filter the information displayed in the Report Generator. Click the Refresh button to apply the Field filter.

### **Reports**

Click the button of the type of file you need. The report generated will then contain all the information in the bottom grid.

### **Save Report Definition**

Saves the settings in the “Items To Show” and “Filters” section. It will prompt you for a name, therefore giving you the ability to have multiple saved settings.

### **Open Report Definition**

Opens any saved report definitions.

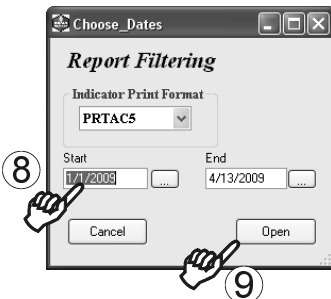
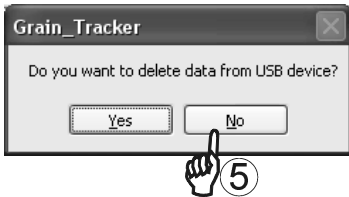
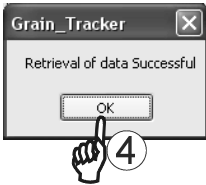
### **Load Single File**

This gives you the ability to view the information from a single “Retrieve Data” action into Grain Tracker™.

### **Print Records**

Use PTRAC5 for scale Indicator.

## Transferring Data Records from Indicator to PC



1. Insert USB flash drive into USB port on PC.
2. Open Grain Tracker™ Program. See page 3.
3. Select “Get Records” a window pops up indicating data transferring.
4. When data has transferred a “Retrieval of data successful” window will pop-up. Select “OK”.
5. A pop-up will ask if you want to delete data from USB flash drive. Do not delete data at this time.
6. Files are now saved in specified file format. See report generator page 9 to select file type.
7. Click “Reports” to print or save.

8. Select start date and end date for data records.
9. Select “Open” to generate report.

This Page Intentionally Blank.